

Customer :

customer

Customer part :

customer part

Comment :

Comment

S1=5.35

S2=6.55

Tmax=464

Tp S2=503.0

PI=0.45

HI=101

Sample =1718.30

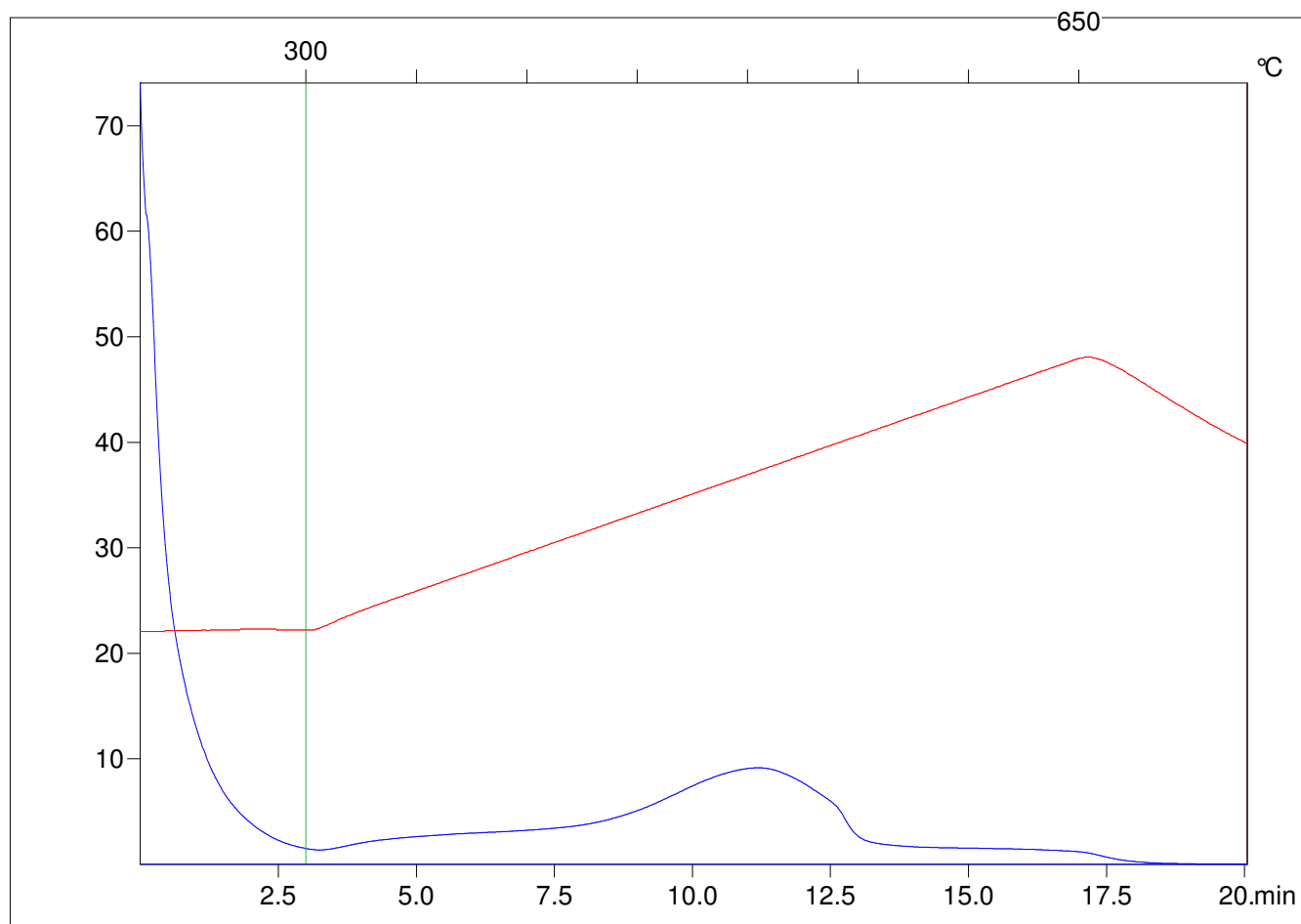
Method =Bulk Rock

Cycle=Basic

KFID(10*9)=1444

Qty =70.9

TOC=6.47



C:\VINC\PK2_1792\PK022.R00 : FID pyrolysis graphic

State Ok

Pyro Status Negative value

Oxi Status Negative value